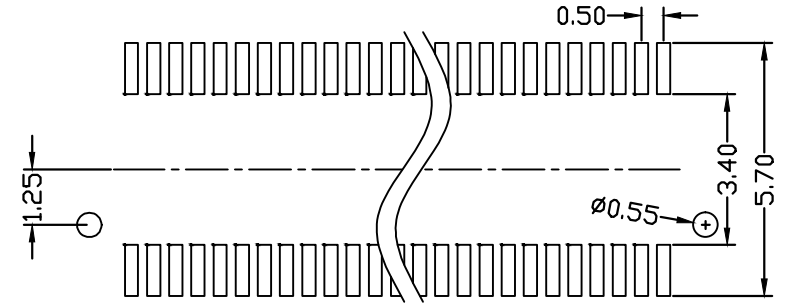
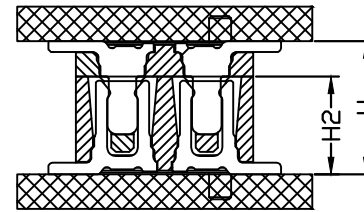
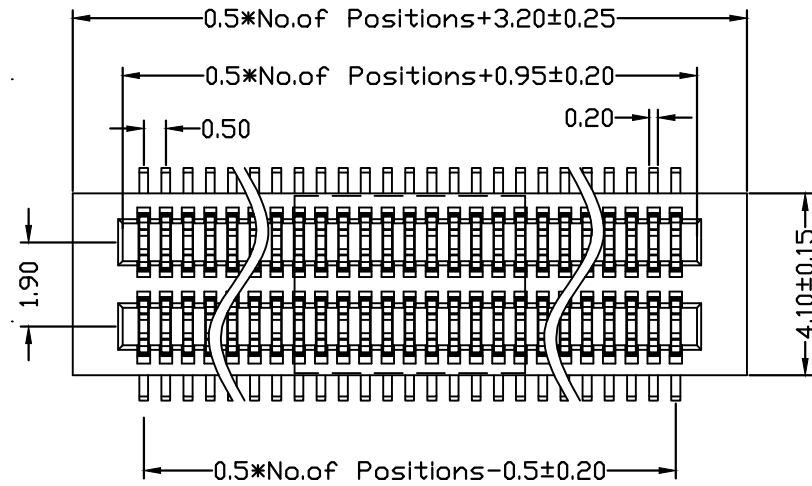


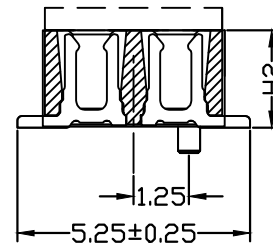
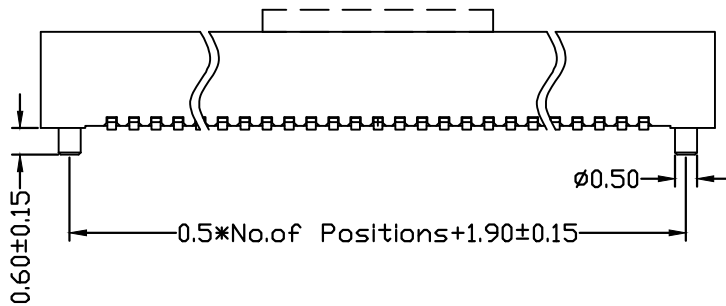
RoHS Compliant

Rev.	change details	effective date	updated by	date
A	Initial release	2020.12.19	FHY	20.12.19



Recommended P.C.B. Layout

ASS'Y HIGH(H)	PLUG(H1)	SOCKET(H2)
3.00	0.80	2.20
3.50	0.80	2.70
4.00	1.00	3.00
4.50	1.50	3.00
5.00	2.00	3.00
5.50	1.50	4.00
6.00	2.00	4.00
6.50	2.00	4.50



NOTES:  
 Current Rating: 0.5A  
 Voltage Rating: 50V AC/DC  
 Contact Resistance: 50 Milliohm Max  
 Insulation Resistance: 100 Megohm Min  
 Operation Temperature: -20°C to +105°C

Housing Material: PA9T+30%G.F(UL94V-0)  
 Contact Material: Phosphor Bronze  
 Contact Plating: Au or Sn Over Ni

UNLESS OTHERWISE STATED		ORIGINALLY BY
DIMENSIONS IN mm		DRAWN: FHY
TOLERANCE:		CHECKED: FY
ANGLEAR ±1°	LINEAR	APPROVED: FY
	X 0.5	DATE: 2020.12.19
	X.X ±0.2	
	X.XX ±0.1	

**ZWON**



深圳市征华电子有限公司  
 Shenzhen ZWON Electronics Co.,Ltd.

SERIES: 0.50 BTB/Female/Dual Slot/SMT

TYPICAL MODEL: 0.50mm BTB 母头 双槽 SMT 带柱

Drawing No.		DRXXX-XX
Scale	Revision	Sheet
FIT	A	1 of 1
ZWON P/N:		
Customer P/N:		