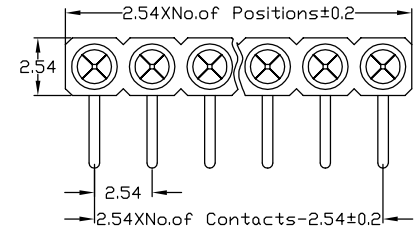
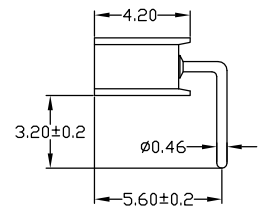
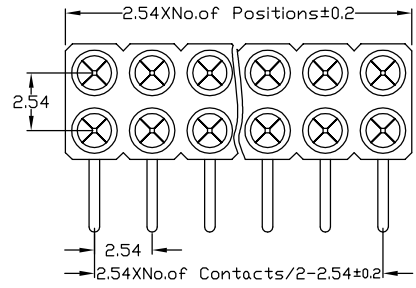
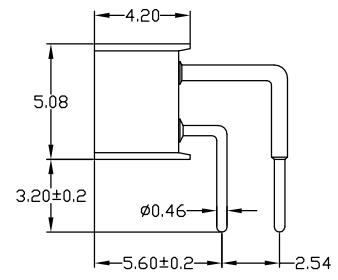


RoHS Compliant

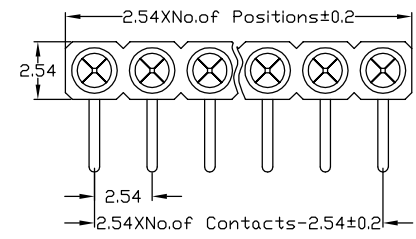
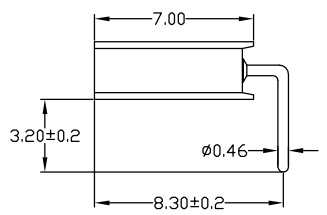
Rev.	change details	effective date	updated by	date
A	Initial release	2020.12.19	FHY	20.12.19



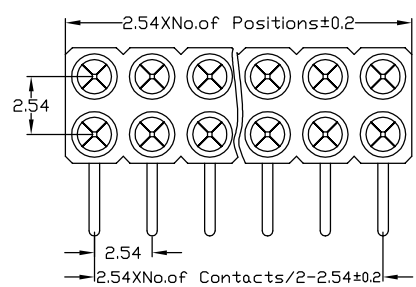
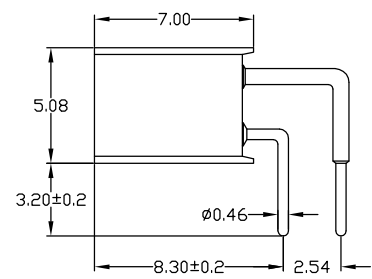
Right socket connector:solder tail single row
 Availability from:2 to 40 contacts
 Standard number of contacts 20, 25, 32 and 40



Right socket connector:solder tail double row
 Availability from:4 to 80 contacts
 Standard number of contacts 20, 40, 56, 60 and 72



Right socket connector:solder tail single row
 Availability from:2 to 40 contacts
 Standard number of contacts 20, 25, 32 and 40



Right socket connector:solder tail double row
 Availability from:4 to 80 contacts
 Standard number of contacts 20, 40, 56, 60 and 72

Std. Material
 Insulator : Black glass filled polyester PPS-GF30-FR
 Flammability : UL94V-0
 Sleeve : Brass CuZn 36Pb3(36000)
 Contact clip (6 finger) : Beryllium copper (C17200)
 Mating pin ϕ : 0.70 to 0.90 mm or 0.635SSQ
 Forces : (polished steel gauge ϕ 0.76mm)
 -Insertion : 1.2 N typ.
 -Withdrawal : 0.6N typ.
 Mechanical life : min 500 cycles
 Rated current : 3Amp
 Contact resistance: Max 10m Ω
 Dielectric resistance : Min 1000V RMS
Temperature
 Operating Temp. : -40 $^{\circ}$ C to 105 $^{\circ}$ C
 Max. Processing Temp.: 260 $^{\circ}$ C for 10s
Packing : Tray or agree on _____

Ordering Information

No. of Pins	Contact Plating	Insulator Material
Rows*Pins 1/2 x 40	SN: Tin <input type="checkbox"/> G0: 0.8u" Gold <input type="checkbox"/> G1: 1u" Gold <input type="checkbox"/> G2: 1.5u" Gold <input type="checkbox"/> G3: 2u" Gold <input type="checkbox"/> G4: 3u" Gold <input type="checkbox"/> G5: __u" Gold <input type="checkbox"/>	A: PBT <input type="checkbox"/> B: PA6T <input type="checkbox"/> C: PA9T <input type="checkbox"/> D: PA66 <input type="checkbox"/> E: PA46 <input type="checkbox"/> F: LCP <input type="checkbox"/> G: _____ <input type="checkbox"/>
Ordering:(N) 1/2 x <input type="text"/>		

Ordering Dimensions

A	B	C	D	H	W
PA	PB	PC	PD	PW	L

Remarks:

UNLESS OTHERWISE STATED DIMENSIONS IN mm TOLERANCE:	ORIGINALLY BY
	ZWON
	深圳市征华电子有限公司
	Shenzhen ZWON Electronics Co.,Ltd.
	Drawing No. DRXXX-XX
	Scale Revision Sheet
	FIT A 1 of 1
	SERIES: Round FH2.54/Right Angle
	ZWON P/N:
	Customer P/N:
	TYPICAL MODEL: 2.54圆孔排母 90度
	DATE:2020.12.19



发现更多
扫描官网