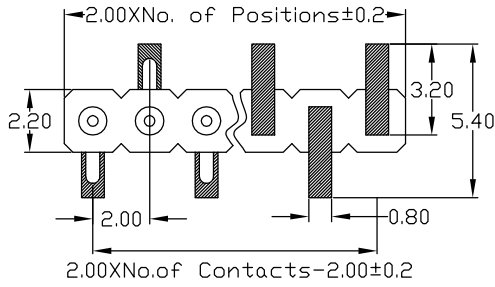
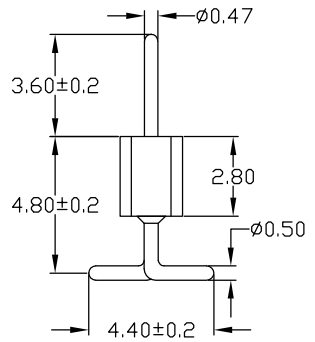
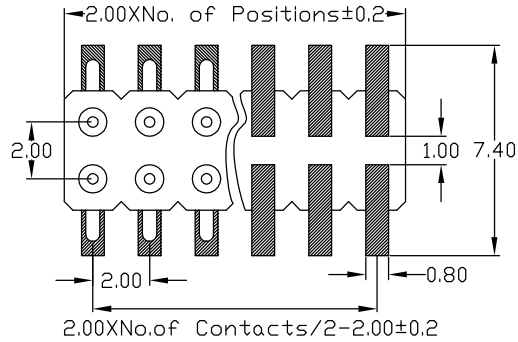
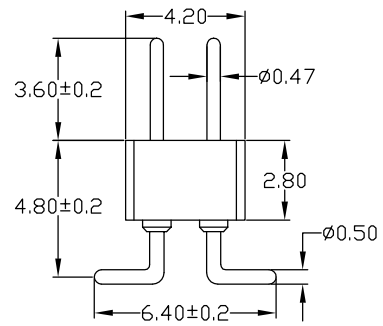


RoHS Compliant

Rev.	change details	effective date	updated by	date
A	Initial release	2020.12.19	FHY	20.12.19



SMT socket connector:single row perpendicular mount
 Availability from:2 to 40 contacts
 Standard number of contacts 40



SMT socket connector:single row perpendicular mount
 Availability from:4 to 80 contacts
 Standard number of contacts 80

Std. Material
 Insulator : Black glass filled polyester PPS-GF30-FR
 Flammability : UL94V-0
 Sleeve : Brass CuZn 36Pb3(36000)
 Mating pin ϕ : 0.47 mm
 Mechanical life : min 500 cycles
 Rated current : 3Amp
 Contact resistance: Max 10m Ω
 Dielectric resistance : Min 1000V_{RMS}
 Coplanary SMT terminations : max 0.1mm(measured on 25 mm long connectors)

Temperature
 Operating Temp. : -40 $^{\circ}$ C to 105 $^{\circ}$ C
 Max. Processing Temp.: 260 $^{\circ}$ C for 10s
Packing : PE bag or agree on_____

Ordering Information

No. of Pins	Contact Plating	Insulator Material
Rows*Pins 1/2 x 40	SN: Tin <input type="checkbox"/> G0: 0.8u" Gold <input type="checkbox"/> G1: 1u" Gold <input type="checkbox"/> G2: 1.5u" Gold <input type="checkbox"/> G3: 2u" Gold <input type="checkbox"/> G4: 3u" Gold <input type="checkbox"/> G5: ___u" Gold <input type="checkbox"/>	A: PBT <input type="checkbox"/> B: PA6T <input type="checkbox"/> C: PA9T <input type="checkbox"/> D: PA66 <input type="checkbox"/> E: PA46 <input type="checkbox"/> F: LCP <input type="checkbox"/> G: _____ <input type="checkbox"/>
Ordering:(N) 1/2 x <input type="checkbox"/>		

Ordering Dimensions

A	B	C	D	H	W
PA	PB	PC	PD	PW	L

Remarks:

UNLESS OTHERWISE STATED DIMENSIONS IN mm TOLERANCE:	ORIGINALLY BY	
	DRAWN: FHY	
	CHECKED: FY	
	APPROVED: FY	
DATE:2020.12.19		
ANGLEAR $\pm 1^{\circ}$	LINEAR X 0.5 X.X ± 0.2 X.XX ± 0.1	

深圳市征华电子有限公司
 Shenzhen ZWON Electronics Co.,Ltd.
 SERIES: Round PH2.0*2.8/SMT
 TYPICAL MODEL: 2.0圆孔排针 塑高2.8 SMT

Drawing No.	DRXXX-XX
Scale	Revision
FIT	A
Sheet	1 of 1
ZWON P/N:	
Customer P/N:	