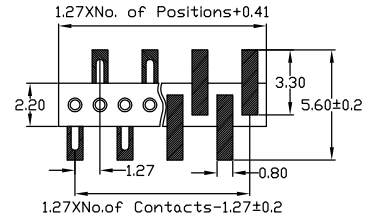
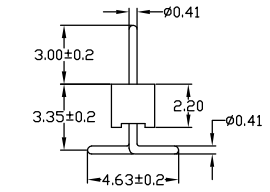
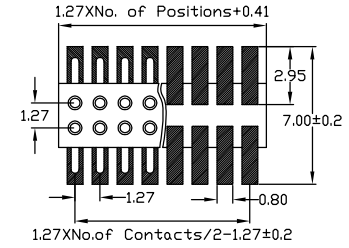
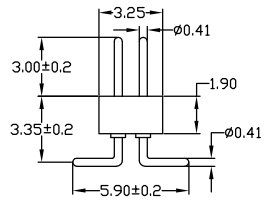


RoHS Compliant

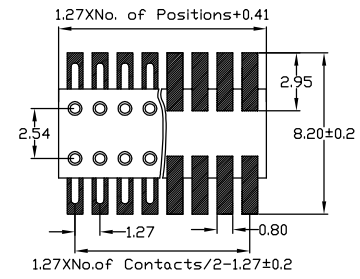
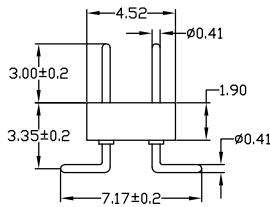
Rev.	change details	effective date	updated by	date
A	Initial release	2020.12.19	FHY	20.12.19



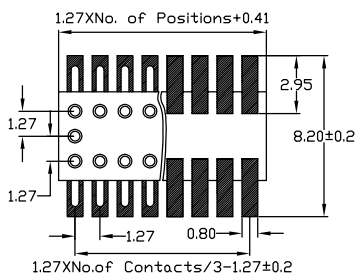
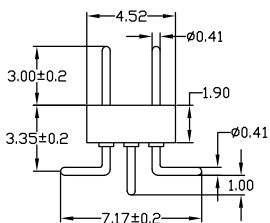
SMT socket connector:single row
perpendicular mount
Availability from:3 to 50 contacts
Standard number of contacts 25 and 50



SMT socket connector:single row
perpendicular mount
Availability from:4 to 100 contacts
Standard number of contacts 50 and 100



SMT socket connector:double row
with 2.54mm rowto row distance
perpendicular mount
Availability from:4 to 100 contacts
Standard number of contacts 100



SMT socket connector:double row
with 2.54mm rowto row distance
perpendicular mount with 2
Availability from:4 to 100 contacts
Standard number of contacts 100

Std. Material
Insulator : Black glass filled polyester PPS-GF30-FR
Flammability : UL94V-0
Sleeve : Brass CuZn 36Pb3(36000)
Mating pin ϕ : 0.41 mm
Mechanical life : min 500 cycles
Rated current : 1Amp
Contact resistance: Max 10m Ω
Dielectric resistance : Min 1000V_{RMS}
Coplanarity SMT terminations : max 0.1mm (measured on 25mm long connectors)

Temperature
Operating Temp. : -40 $^{\circ}$ C to 105 $^{\circ}$ C
Max. Processing Temp.: 260 $^{\circ}$ C for 10s
Packing : PE bag or agree on_____

Ordering Information

No. of Pins	Contact Plating	Insulator Material
Rows*Pins 1/2 x 50	SN: Tin <input type="checkbox"/> G0: 0.8u" Gold <input type="checkbox"/> G1: 1u" Gold <input type="checkbox"/> G2: 1.5u" Gold <input type="checkbox"/> G3: 2u" Gold <input type="checkbox"/> G4: 3u" Gold <input type="checkbox"/> G5: ___u" Gold <input type="checkbox"/>	A: PBT <input type="checkbox"/> B: PA6T <input type="checkbox"/> C: PA9T <input type="checkbox"/> D: PA66 <input type="checkbox"/> E: PA46 <input type="checkbox"/> F: LCP <input type="checkbox"/> G: _____ <input type="checkbox"/>

Ordering Dimensions

A	B	C	D	H	W
PA	PB	PC	PD	PW	L

Remarks:

UNLESS OTHERWISE STATED DIMENSIONS IN mm TOLERANCE:	ORIGINAL BY	ZWON
	DRAWN: FHY	
	CHECKED: FY	
	APPROVED: FY	
DATE:2020.12.19		



深圳市征华电子有限公司
Shenzhen ZWON Electronics Co.,Ltd.

SERIES: Round PH1.27/SMT
TYPICAL MODEL: 1.27 圆孔 排针 SMT

Drawing No.	DRXXX-XX	
Scale	Revision	Sheet
FIT	A	1 of 1
ZWON P/N:		
Customer P/N:		